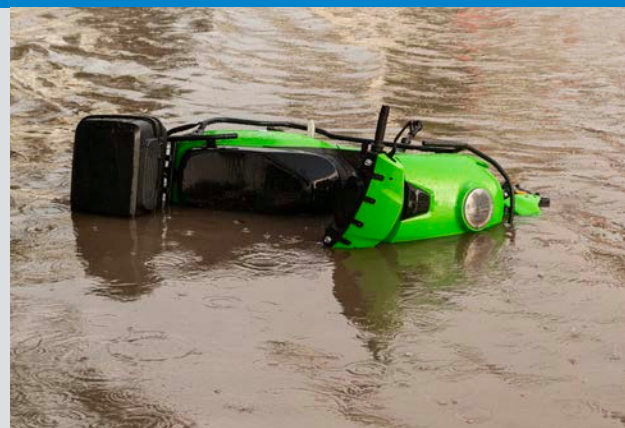


# Lithium-Ion Battery Safety After Flooding



## Follow these precautions for lithium-ion batteries exposed to flooding.

- Notify your local fire department if you believe that lithium-ion batteries might have been exposed to flooding in your home or garage, especially those found in devices such as E-bikes, golf carts and electric vehicles.
- Disconnect any potentially flooded lithium-ion battery-powered devices or vehicles from chargers.
- Remove any potentially flooded batteries or vehicles from buildings or garages. Separate the vehicle from combustibles and structures by 50 feet on all sides.
- If you observe batteries or vehicles emitting a cloud of smoke or gases, or exhibiting a popping or hissing sound, move to a safe distance and notify your local fire department.



## It is important to properly dispose of flood damaged lithium-ion powered products.

- Place flood damaged lithium-ion powered products in metal or non-combustible tubs and keep at least 6 feet away from debris and structures.
- Do not put lithium-ion battery-powered products in with storm debris for pick up.
- Never put lithium-ion batteries inside garbage or recycle carts or bins.

For more information and free resources, visit  
[usfa.fema.gov](https://usfa.fema.gov)

